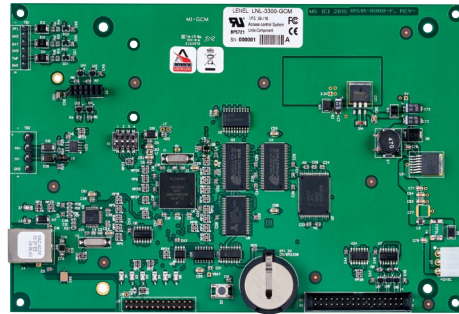


# LNL-3300-GCM

## Intelligent System Controller



### Overview

Lenel® SH series hardware facilitates the migration of iSTAR® Pro hardware and SOFTWARE HOUSE® C•CURE® systems to Lenel access control hardware and OnGuard® software. The hardware in the Lenel SH series provides a one-for-one, plug-compatible, OnGuard ready replacement for iSTAR Pro hardware.\*

Delivering power, functionality and flexibility, the LNL-3300-GCM Intelligent System Controller (ISC) provides fast decision-making, event reporting, and database storage for the Lenel hardware platform.

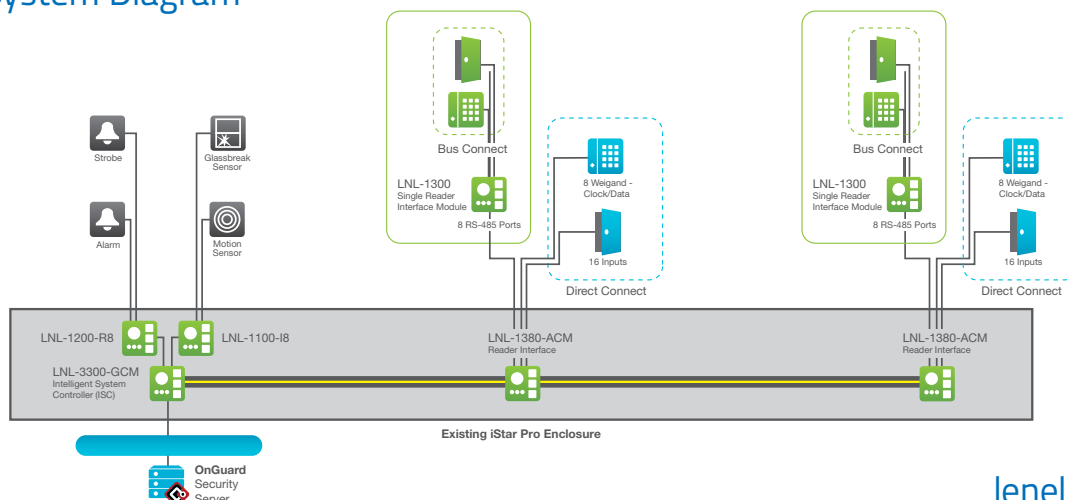
The LNL-3300-GCM communicates with the host via the on-board 10-BaseT/100Base-TX Ethernet port and connects to the LNL-1380-ACM reader interface module via a 34-pin ribbon cable. Up to two LNL-1380-ACM modules are supported. Remote serial I/O panels may also be connected to the external 2-wire RS-485 multi-drop communication bus.

\*Additional hardware may need to be replaced.

### Features & Functionality

- Lenel replacement for iSTAR Pro GCM General Controller Module
- Support for two LNL-1380-ACM Access Controller Modules and up to 64 readers
- On-board, high-speed Ethernet 10/100Base-T upstream port, DHCP and fixed IP addressing supported
- DNS device naming through DHCP extended commands
- 15 MB of available on-board, non-volatile flash memory
- Battery-backed, non-volatile storage of 50,000 events
- Firmware stored in flash memory, background download of firmware updates supported
- Support for up to 16 different formats
- Enhanced anti-passback capabilities
- Elevator control support for up to 128 floors
- Three dedicated inputs for tamper and power failure status
- Advanced Encryption Standard (AES) 128-bit algorithm for communications to reader and I/O modules
- AES128 or TLS1.1 (with AES256 support) communication to OnGuard

### System Diagram



# LNL-3300-GCM

## Specifications

Power Supply	
Primary Power	12 VDC $\pm$ 10%
Memory and Clock Backup Battery	3 V Lithium, type BR2325, BR2330 or CR2330
Inputs	
Primary (Ethernet) Port 0	10/100Base-T Ethernet high-speed port
Cabinet tamper Low UPS battery UPS power fault	Dedicated, non-supervised
Downstream Ports	2-wire RS-485: 9600 to 115200 bps, asynchronous
Inputs	3 non-supervised, dedicated for cabinet tamper, low UPS battery and UPS power fault monitoring
Cable Requirements	
Power	1 twisted pair, 18 AWG
Ethernet	Cat 5 minimum
RS-485	1 twisted pair with drain wire and shield, 120 ohm impedance, 24 AWG, 4000' (1219m) maximum
Environmental	
Operating Temperature	32°F to 122°F (0°C to +50°C)
Storage Temperature	-67°F to 185°F (-55°C to +85°C)
Humidity	5 to 95% RHNC
Mechanical	
Dimensions	5.8" W x 8.6" L x 1" H (148mm x 218mm x 25mm)
Weight	5.7 oz. (162g) nominal, without terminal blocks
Certifications	
UL294, CE marking, RoHS compliant	
UL294, CE marking, RoHS compliant	

*Note: The interface LNL-3300-GCM is for use in low voltage, Class 2 circuits only. The installation of this device must comply with all local fire and electrical codes.*

## Ordering Information

Part No.	Description
LNL-3300-GCM	Intelligent System Controller



[lenel.com](http://lenel.com)

(866) 788-5095

Specifications subject to change without notice.

©2017 United Technologies Corporation. All rights reserved. All trademarks are the property of their respective owners.

Lenel is a part of UTC Climate, Controls & Security, a unit of United Technologies Corporation.

iSTAR®, C•CURE®, and SOFTWARE HOUSE® are trademarks of Sensormatic Electronics, LLC. Lenel is not affiliated in any way with Sensormatic Electronics, LLC.

2017/12 (GSP-2463)